

Medications

that May be Associated with a Risk of Falls.



This list contains medications that are associated with – or have side effects associated with - a risk of falls. It also identifies medications that are potentially inappropriate for older adults who are already at risk of falls.

A	dimenhydrINATE	levETIRAcetam	quiNIDine
acebutolol	diphenhydrAMINE (oral only)	levodopa	R
alfuzosin	dipyridamole	levomilnacipran	ramipril
ALPRAZolam	disopyramide	loperamide	ranitidine
aMLLoride	divalproex	LORazepam	risperIDONE
amiodarone	donepezil	losartan	rivastigmine
amitriptyline	doxazosin	loxapine	S
amLODIPine	doxepin (>6mg)	lurasidone	scopolamine
ARIPiprazole	doxylamine	M	sertraline
asenapine	dronedarone	meperidine	silodosin
atenolol	DULoxetine	methocarbamol	solifenacin
atropine (excludes ophth)	E	methotrimeprazine	sotalol
azilsartan	enalapril	methyl dopa	spironolactone (>25mg/d)
B	eprenone	metoclopramide	T
baclofen	eprosartan	metolazone	tamsulosin
belladonna alkaloid	escitalopram	metoprolol	telmisartan
benazepril	ethacrynic acid	mexiletine	temazepam
benztropine	ethosuximide	mirtazapine	terazosin
betahistine	F	moclobemide	tiZANidine
bisoprolol	famotidine	morphine	tolterodine
brexpiprazole	felodipine	N	topiramate
brompheniramine	fentaNYL	nadolol	traMADol
bumetanide	fesoterodine	NIFEdipine	trandolapril
buPROPion	flecainide	nitroglycerin	tranylcypromine
busPIRone	FLUoxetine	nortriptyline	traZODone
butalbital	flupentixol	O	triazolam
C	fluPHENAZine	OLANZapine	trifluoperazine
candesartan	flurazepam	olmesartan	trihexyphenidyl
captopril	fluvoxAMINE	orphenadrine	triprolidine
carBAMazepine	fosinopril	oxazepam	tropium
carvedilol	furosemide	OXcarbazepine	V
chloral hydrate	G	oxybutynin	valproic acid
chlordiazepOXIDE	gabapentin	oxyCODONE	valsartan +/- sacubitril
chlorpheniramine	galantamine	P	venlafaxine
chlorproMAZINE	glimepiride	paliperidone	verapamil
chlorproPAMIDE	glyBURIDE	PARoxetine	vigabatrin
chlorthalidone	guanFACINE	pentazocine	vilazodone
cilazapril	H	periciazine	vortioxetine
citalopram	haloperidol	perindopril	Z
clomiPRAMINE	hydrALAZINE	phenelzine	ziprasidone
clonazepam	hydrochlorothiazide	PHENobarbital	zolidem
clonIDine	HYDROmorphone	phenytoin	zopiclone
clorazepate	hydrOXYzine	pimozide	zuclopenthixol
cloZAPine	hyoscine	pindolol	
codeine	HYDROcodone	prazosin	
cyclobenzaprine	I	pregabalin	
cyproheptadine	imipramine	procaïnamide	
D	indapamide	prochlorperazine	
darifenacin	indomethacin	promethazine	
desipramine	insulin	propafenone	
desvenlafaxine	irbesartan	propranolol	
diazepam	isosorbide di/mono-nitrate	pyrilamine	
dicyclomine	L	Q	
digoxin	labetalol	QUETiapine	
diltiazem	lamoTRIGine	quinapril	



Antidepressants

Can lead to:

- Dizziness or drowsiness
- Orthostatic hypotension
- Visual & psychomotor impairment



Antipsychotics

Can lead to:

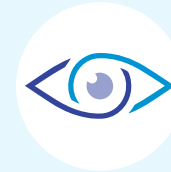
- Drowsiness or lethargy
- Confusion
- Balance/gait disturbance



Opioids

Can lead to:

- Drowsiness
- Confusion
- Cognitive dysfunction



Anticholinergics

Can lead to:

- Blurred vision
- Cognitive impairment
- Drowsiness



Insulin

Hypoglycemia

can lead to:

- Dizziness
- Confusion, disorientation
- Weakness



Cardiovascular

Can lead to:

- Orthostatic hypotension
- Syncope/dizziness
- Confusion, cognitive impairment
- Nocturia with diuretics



Sedatives

Can lead to:

- Drowsiness
- Confusion, cognitive impairment
- Impaired balance

The list is not exhaustive. Clinical decisions should not be made based on this list alone as it may not apply to all situations.